

McNair Scholars Program connects students to PhD programs

ÁNGEL L. REYES-RODRÍGUEZ

DESTINATION PH.D.

YOU SHOULD GO TO GRAD SCHOOL

You are developing the skills to excel in graduate school.

We want to connect you with resources.





DESTINATION PH.D.

CONTENT TODAY

- Decide to go to grad school
- Be accepted into graduate schools
- McNair can guide and support you
- Apply to the McNair Scholars Program



***List the characteristics of Master's
and Ph.D. Programs.***

***What themes and differences
emerge?***

CONSIDER IT,

APPLY TO PH.D. PROGRAMS

Reasons to Pursue a Ph.D.

Passion for Research and Knowledge

- Deep Dive into a Subject: Ph.D. programs allow you to deeply explore a subject you're passionate about.
- Innovative Research: Contribute to cutting-edge research and potentially make groundbreaking discoveries.

Career Opportunities

- Academic Careers: Essential for becoming a university professor or researcher.
- Specialized Roles: Opens doors to specialized roles in industry, government, and non-profits.
- Leadership Positions: Ph.D. holders are often considered for leadership and high-level positions.



CONSIDER IT,

APPLY TO PH.D. PROGRAMS

Reasons to Pursue a Ph.D.

Personal and Intellectual Growth

- **Critical Thinking:** Develop advanced critical thinking and problem-solving skills.
- **Expertise:** Become an expert in your field, gaining deep knowledge and insight.
- **Communication Skills:** Enhance your ability to communicate complex ideas effectively.

Personal Fulfillment

- **Achievement:** Completing a Ph.D. is a significant personal achievement and a testament to perseverance.
- **Impact:** The potential to make a meaningful impact in your field and society.



RESOURCES

PH.D. PROGRAMS: SELECTIVE BUT OFFER KEY RESOURCES

Tuition

Free or subsidized,
especially in STEM

Stipends

Payments to you so you can
go to school full time;
Includes assistantships

Specialization

Small targeted classes;
research and real-life field
experience

You

You drive your career; class
selection, timing, scope,
networking.



***List your selection criteria for
graduate programs.***

What themes emerge?



FIT IS KEY!

GRAD SCHOOLS APPLICATIONS

Research Experience

Involvement in research projects, publications, presentations, and any other research-related activities).

Statement of Purpose (SOP) or Personal Statement

This is your opportunity to explain why you want to pursue a Ph.D., your research interests, and how your background prepares you for this path. It should articulate your academic and professional goals and why the specific program is a good fit for you.



FIT IS KEY!

GRAD SCHOOLS APPLICATIONS

Letters of Recommendation

Typically, three letters from professors or professionals who can attest to your academic abilities, research potential, and personal qualities.

Academic Transcripts

These provide a record of your academic performance and achievements. Admissions committees look for a strong academic record, particularly in relevant fields of study.



FIT IS KEY!

GRAD SCHOOLS APPLICATIONS

Curriculum Vitae (CV) or Resume

This document outlines your academic and professional experience, including education, research projects, publications, presentations, and relevant work experience.

Research Proposal (if required)

Some programs require a detailed research proposal outlining your intended research topic, methodology, and potential impact. This demonstrates your ability to plan and conduct research.



FIT IS KEY!

GRAD SCHOOLS APPLICATIONS

Writing Samples

Writing samples showcase your writing ability, critical thinking, and research skills. They should be your best work and relevant to your research interests.

Standardized Test Scores (e.g., GRE)

Some programs require GRE scores. However, the importance of these scores has been declining in many fields.

Work Experience

Relevant professional experience can strengthen your application, especially if it involves research or work closely related to your proposed field of study.

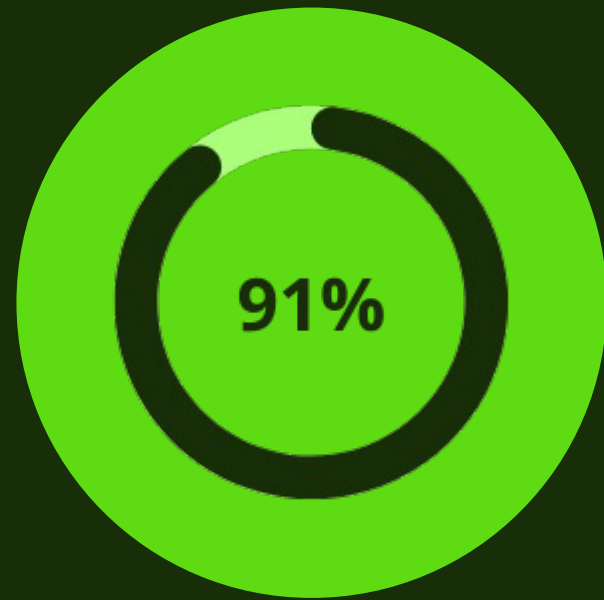
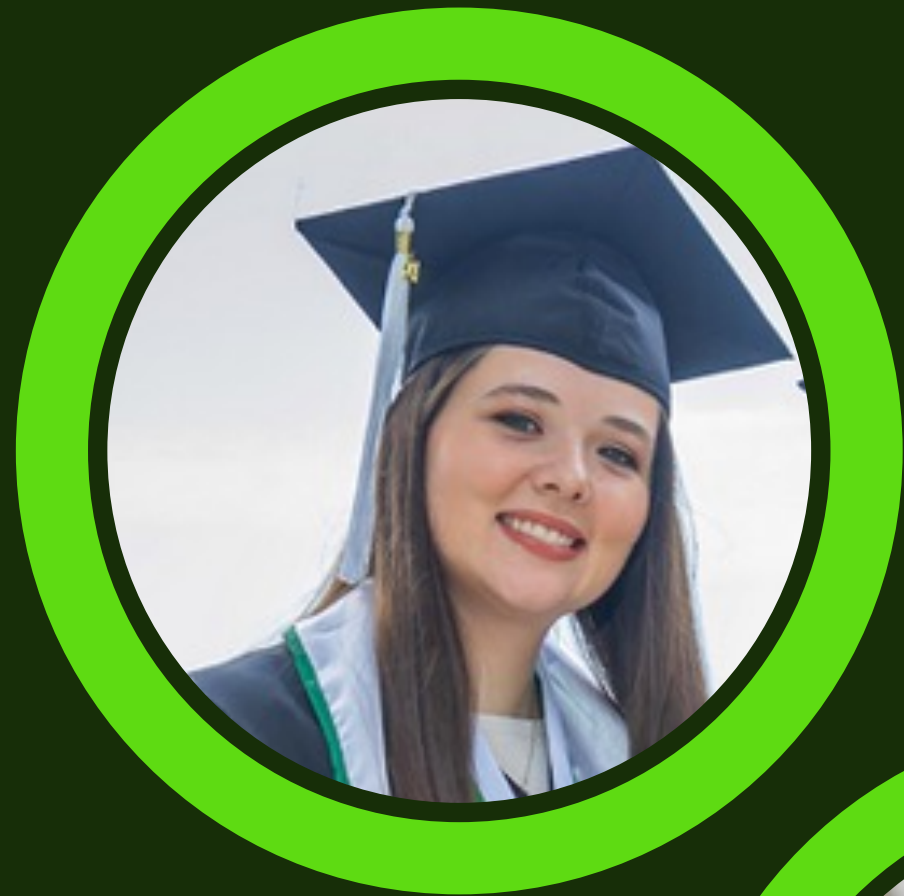


FIT IS KEY!

GRAD SCHOOLS APPLICATIONS

Relative Importance Summary

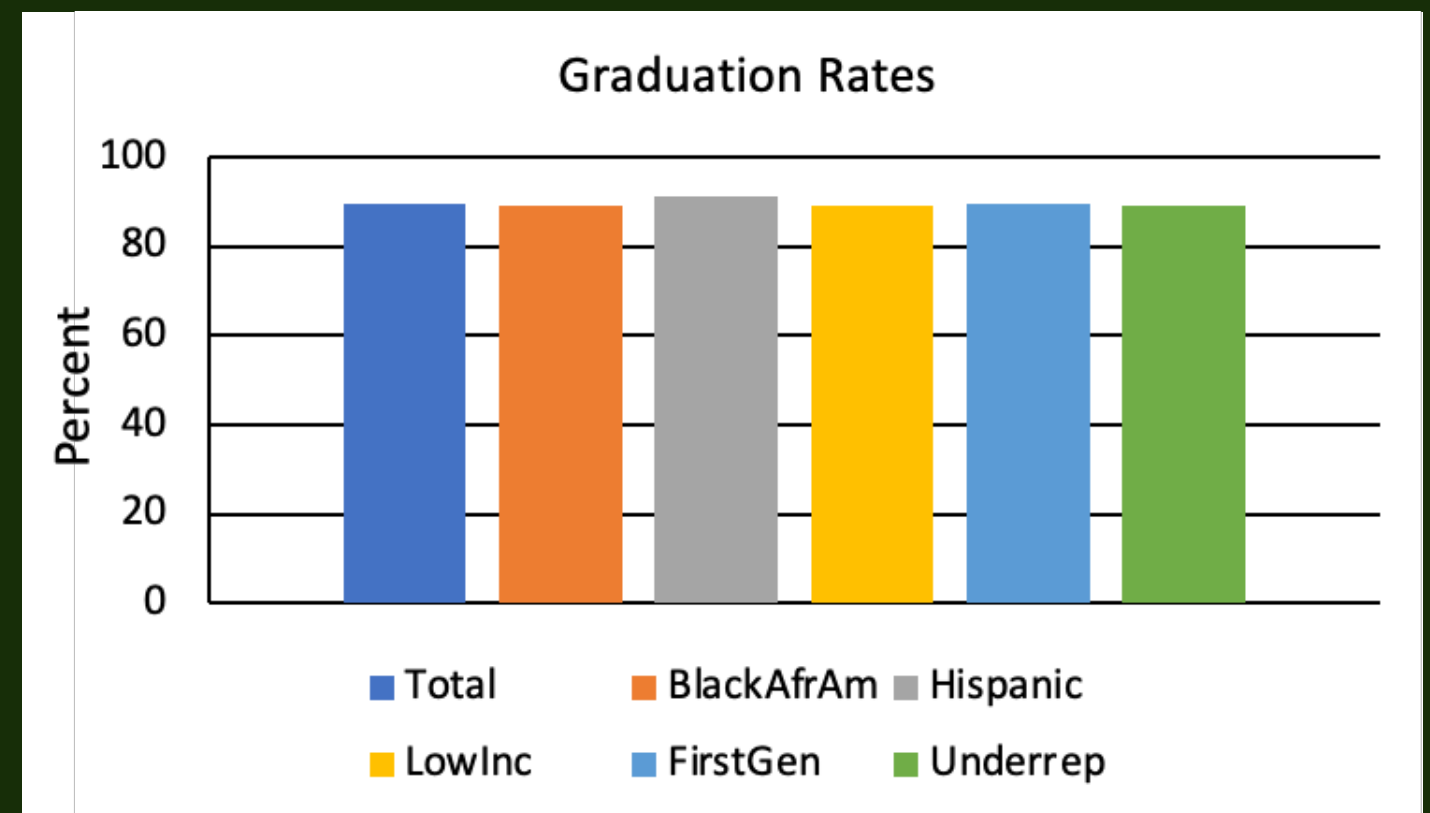
- Very High: Statement of Purpose, Letters of Recommendation, Research Experience
- High: Academic Transcripts, CV/Resume, Research Proposal (if required), Writing Samples
- Variable: Standardized Test Scores, Work Experience

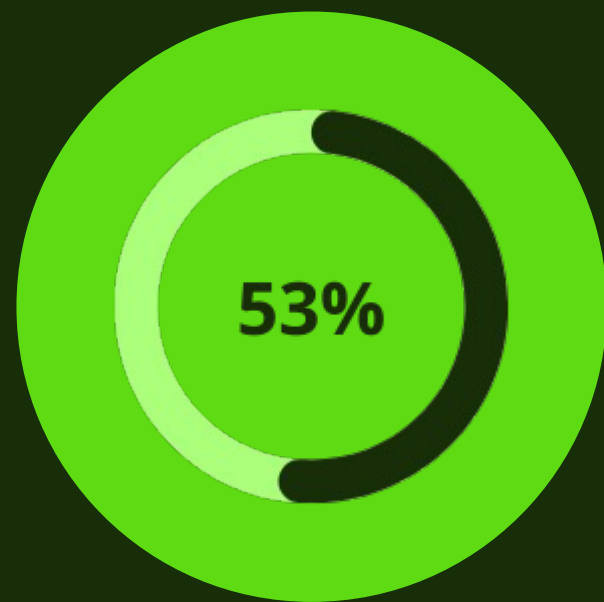


GRAD SCHOOL PREP

MCNAIR HELPS!

Equitable Outcomes





GRAD SCHOOL PREP

MCNAIR HELPS!

Scholars are accepted into graduate schools

McNair Scholars are commonly accepted with free tuition and assistantships.

Direct to Ph.D. Options

Students in STEM can skip Masters and go straight to Ph.D. Programs.

HOW DO WE DO IT?

3 CORE SERVICES

1

Research

2

Mentorship

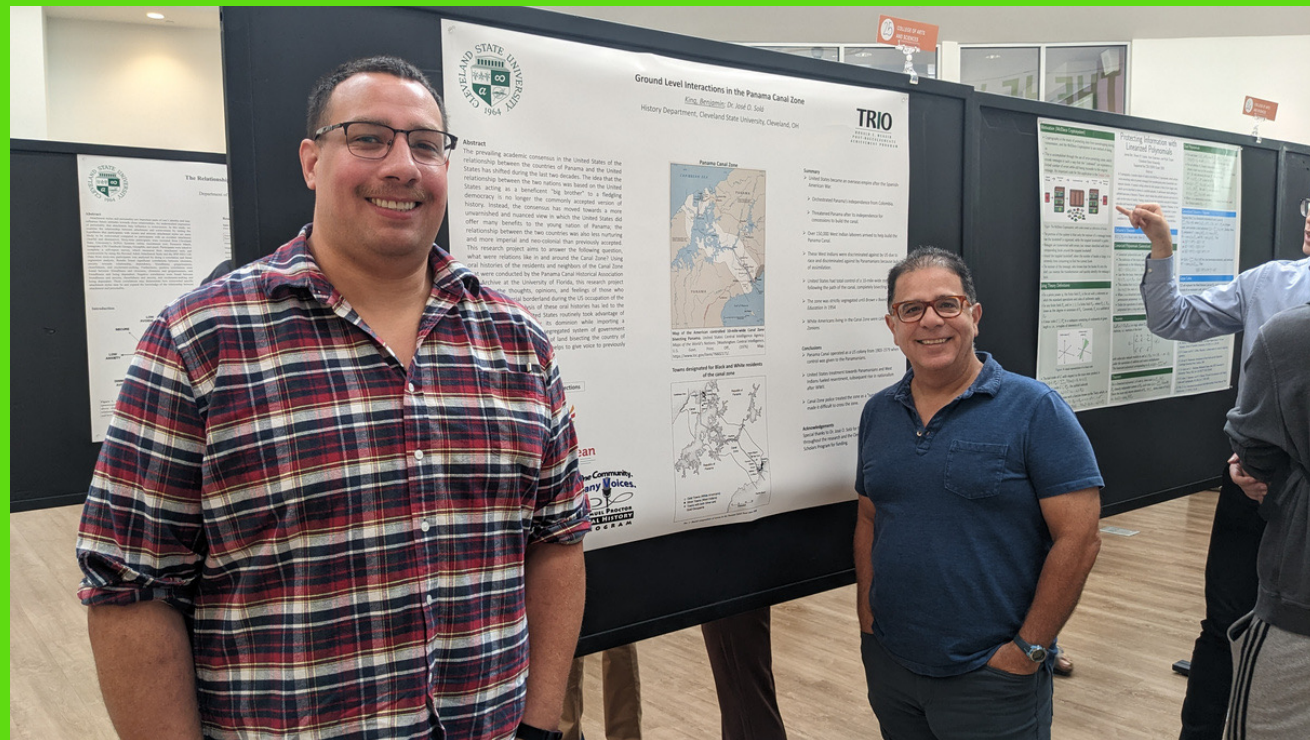
3

Career
Development



CORE SERVICE

MENTORSHIP

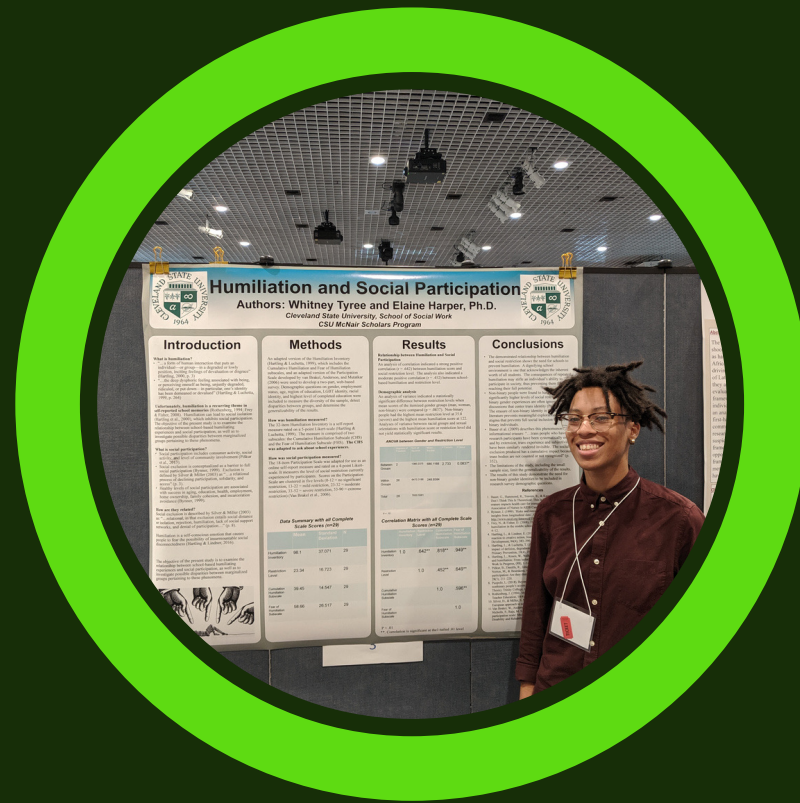


CORE SERVICE

CAREER DEVELOPMENT



Conference Travel



Presentations



Workshops

ALUMNI SUPPORT

SUPPORT



Opportunities



Faculty representation



Overall support

SUMMER RESEARCH INSTITUTE

BENEFITS

\$2,800

Baseline payment for
Summer Research

Reagents

Funded for books each
semester

Dorms

McNair funds 2 months of
dorm "rent"

Food

Meals as snacks are
provided, everyday

FALL AND SPRING

BENEFITS

\$400

Funded for books each semester

Cultural Events

Dinner and tickets to attend plays, concert, exhibits, etc.

Networking

Connect with scholars, alumni, faculty, and people in your fields

Support

Customized support, from advisors to loaning electronic devices



CONTACT US

APPLY TODAY





WE WANT TO HELP YOU!

CONTACT US



216 802 3391



<https://www.csuohio.edu/mcnair-scholars>



SR 155

Program could help you
graduate school



graduate education
advantaged groups

graduates enroll in
higher ed to their peers

Graduate Education



First generation college students

McNair Scholars Program supports
undergraduate students who will
pursue Ph.D. degrees

McNair Scholars Program could help you
pursue a graduate degree

- First-generation students from low-income families
- Students from underrepresented minority groups in higher ed
 - African American, Hispanic, Native American, Pacific Islander, Native Hawaiians
- GPA of 2.8 or higher
- Plan to pursue a Ph.D. (or MS)



mcnairprogram@csuohio.edu



THANK YOU